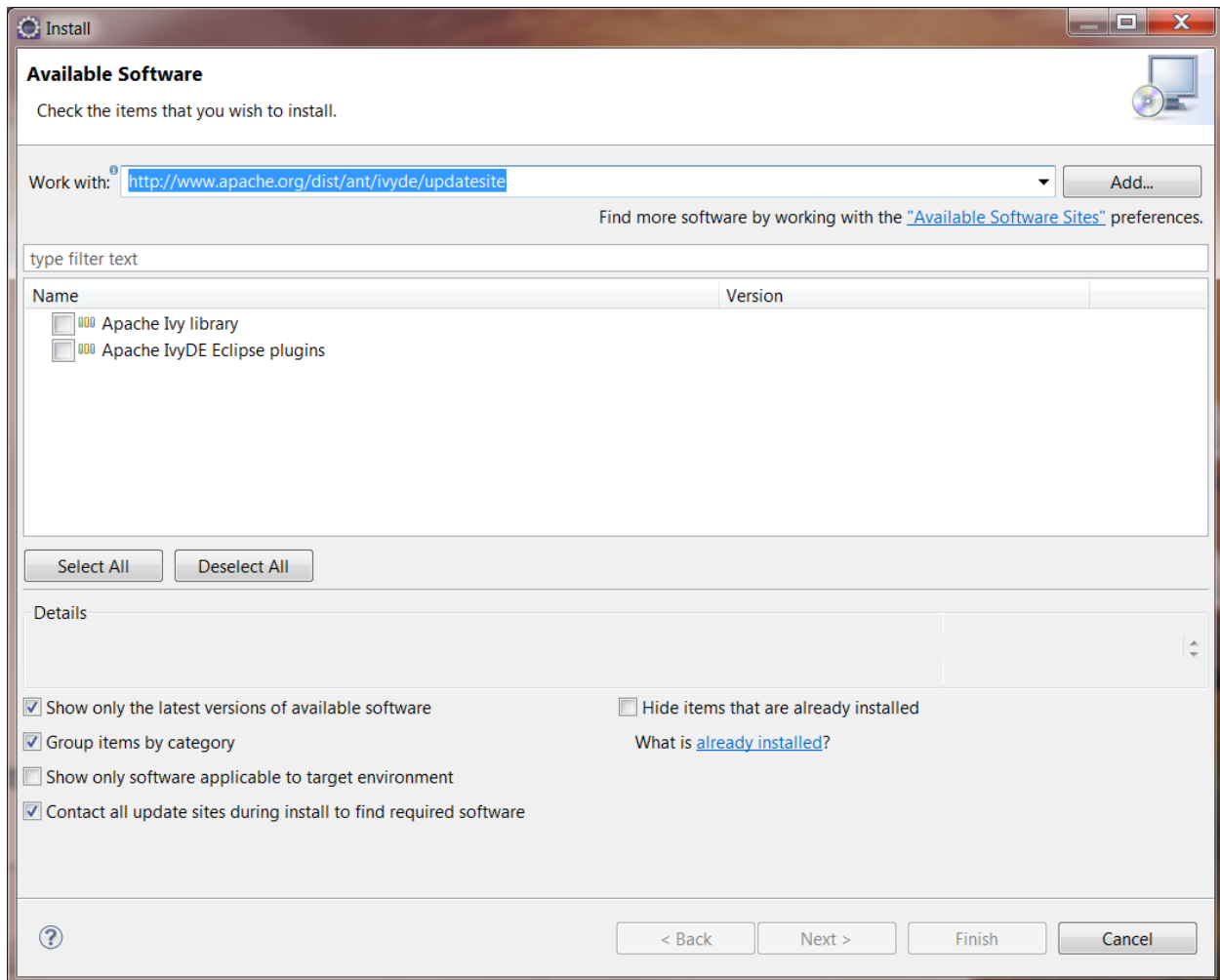


Environment Setup for Eclipse

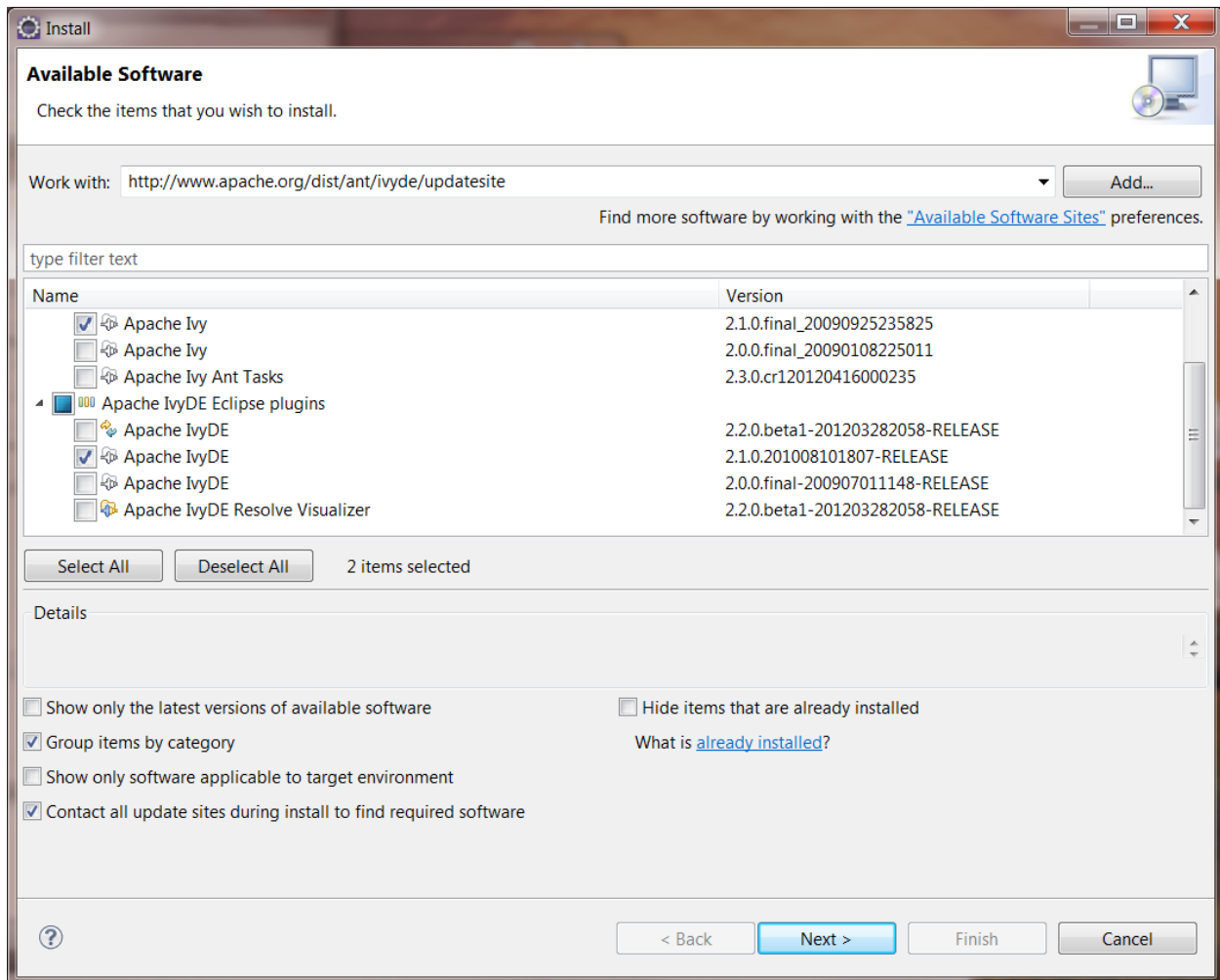
1. Download and install Java 1.6 Java SE development kit.
<http://www.oracle.com/technetwork/java/javase/downloads/jdk-6u25-download-346242.html>
2. Setup JAVA_HOME environment variable to point to your 1.6 java directory.
3. Add %JAVA_HOME%\bin to the path environment variable.
4. Download Eclipse from www.eclipse.org or your favorite IDE. I put eclipse in C:\env\eclipse, using the env directory as a focal point. Any directory is ok.
5. Go to site <ftp://ftpgolden.pentaho.com/> user name ftpgolden. You will need a password to login.
6. Navigate to PentahoGolden/installer/bisuite/4.5.0-GA directory and download the pentaho-business-analytics-4.5.0-GA-x64.exe file. Execute the file to install Pentaho suite. This will install Pentaho as a stand-alone application. This step is not required for the local development build but can give you a working version to refer to.
7. Google subclipse and find a site that gives you the instructions on how to install subclipse in the eclipse application. I found this here.
<http://subclipse.tigris.org/servlets/ProjectProcess?pageID=p4wYuA>
8. Register the SVN repository. Start Eclipse and open the SVN perspective. Right-click on the blank area that contains the source repositories and select “new”, and then “Repository Location”. Enter the URL of <svn://source.pentaho.org/svnroot> for the repository.
9. To check out the 7 projects needed for the “Platform” system, open the svnroot repository and navigate to pentaho-platform-trunk. Each of the folders shown under trunk will become a project in Eclipse. You can right click on each folder individually or select all of them and right click followed by checkout. The folders to checkout at the time of this document are:
 - api
 - core
 - repository
 - scheduler
 - extensions
 - user_console
 - assembly

The names are listed in order of increasing dependency. Building the projects in order listed guarantees that dependent projects will be built before the projects that depend on them.

10. Google IvyDe and download the two Ivy plugins from <http://www.apache.org/dist/ant/ivyde/updatesite>. Two products were displayed as shown below. At the time we did this, one of them was a beta although this is not obvious.

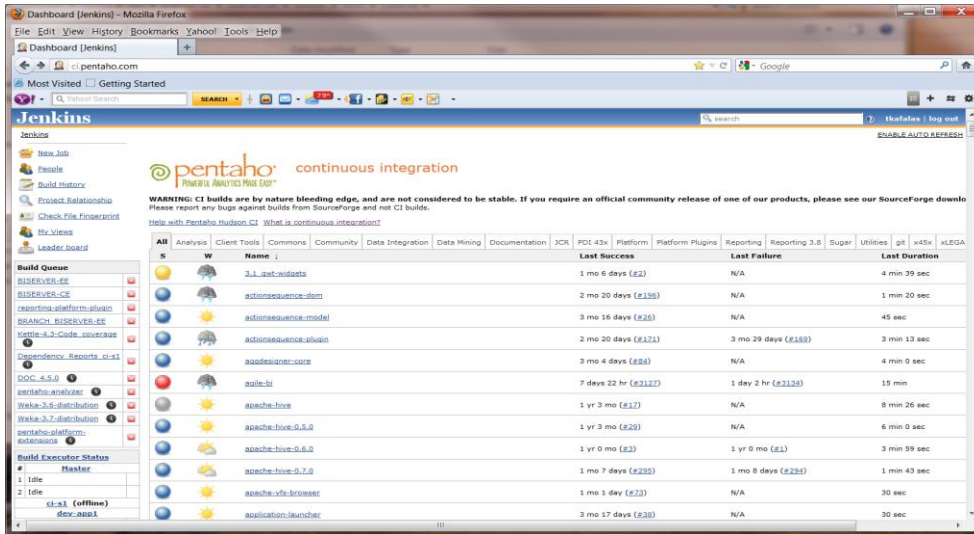


To check the versions and avoid downloading a beta version, un-check the latest version checkbox and open the folders to see the available versions as shown below:

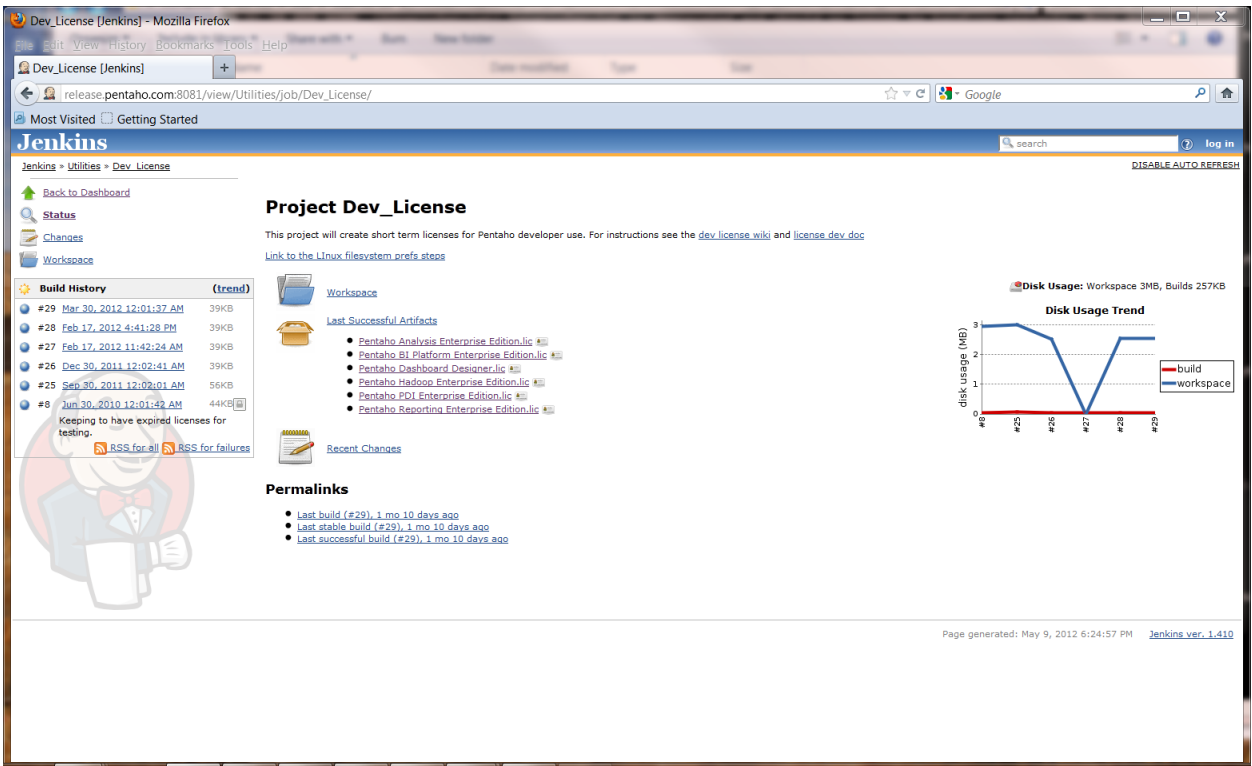


We found the beta did not work correctly so we uninstalled and reinstalled the version shown above.

11. Enter ci.pentaho.com as the URL to your favorite browser. You will need to click on the "log in" button on the top right of the screen. Enter your name and password.



12. There is a set of tabs above the list of items. Click on the Sugar tab. Next click on the BISERVER-EE reference. You will be brought to a page listing Last Successful Artifacts; under which will be possible downloads for the Enterprise edition BI server. I clicked on biserver-ee-TRUNK-SNAPSHOT-jenkins-BISERVER.EE-4409.jar but the number will vary. This will start a download of the Enterprise Edition BISERVER (alias BA Server).
13. Unzip the above downloaded file in your directory. I put it in \env\biserver-ee.
14. The enterprise edition must be licensed to use. Go to http://release.pentaho.com:8081/view/Utilities/job/Dev_License/. You should see a list of 6 artifacts all ending with ".lic". These are the temporary licenses you need to install for the enterprise edition. Click on all the links to download all the licenses. Remember where they are as you will need them shortly.



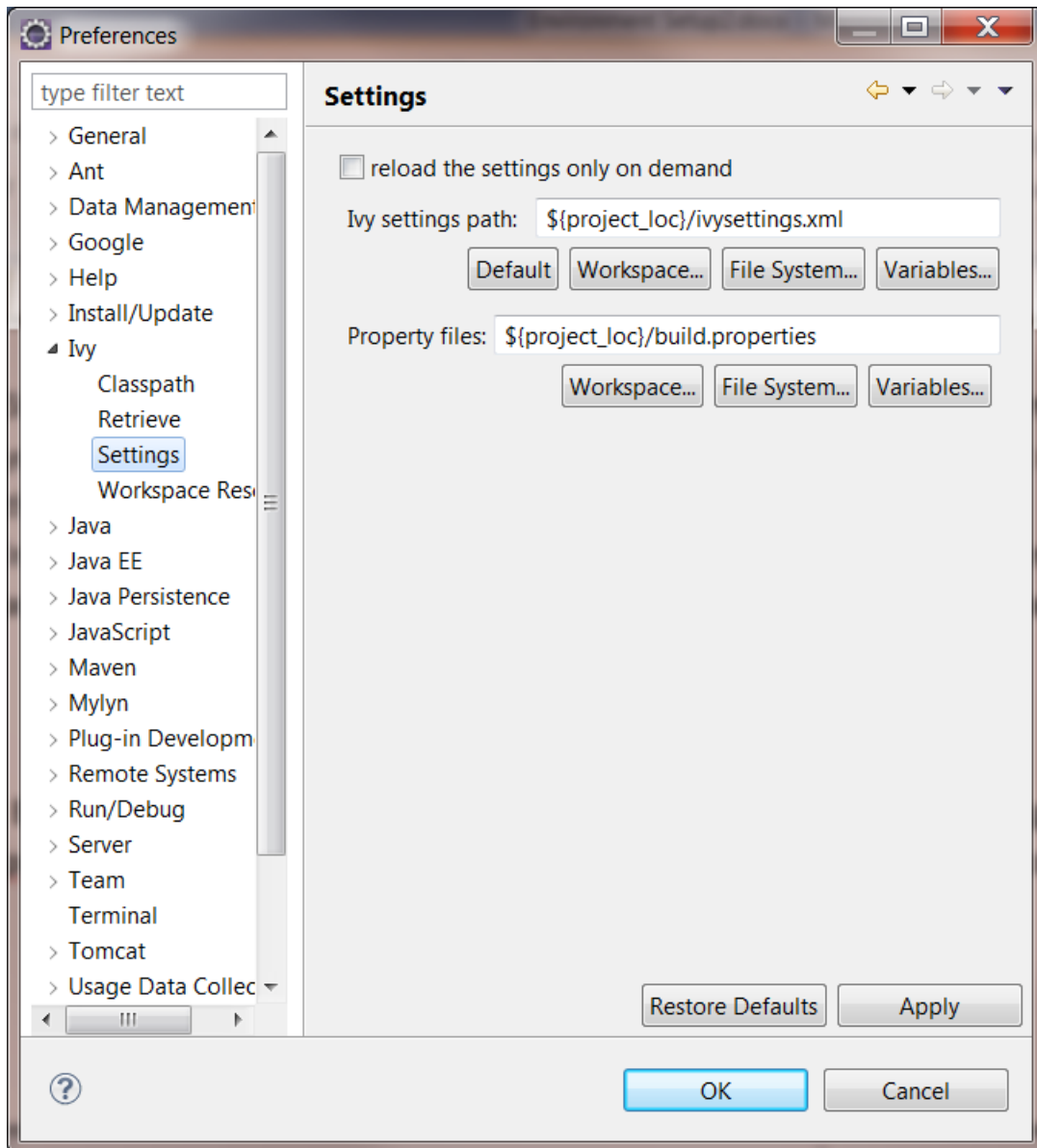
15. Start a windows cmd session. Make sure you start this session as an administrator. To do this you can click on the start button, type CMD into the text box, then right click on the cmd.exe that should display in select "Run as Administrator".

16. In the session just created, navigate to the directory that contains the unzipped BISERVER-EE and execute the following dos commands. Your directory names may vary.

```
cd C:\env\biserver-ee\license-installer
install_license install C:\Users\YourUserName\Downloads\*.lic
```

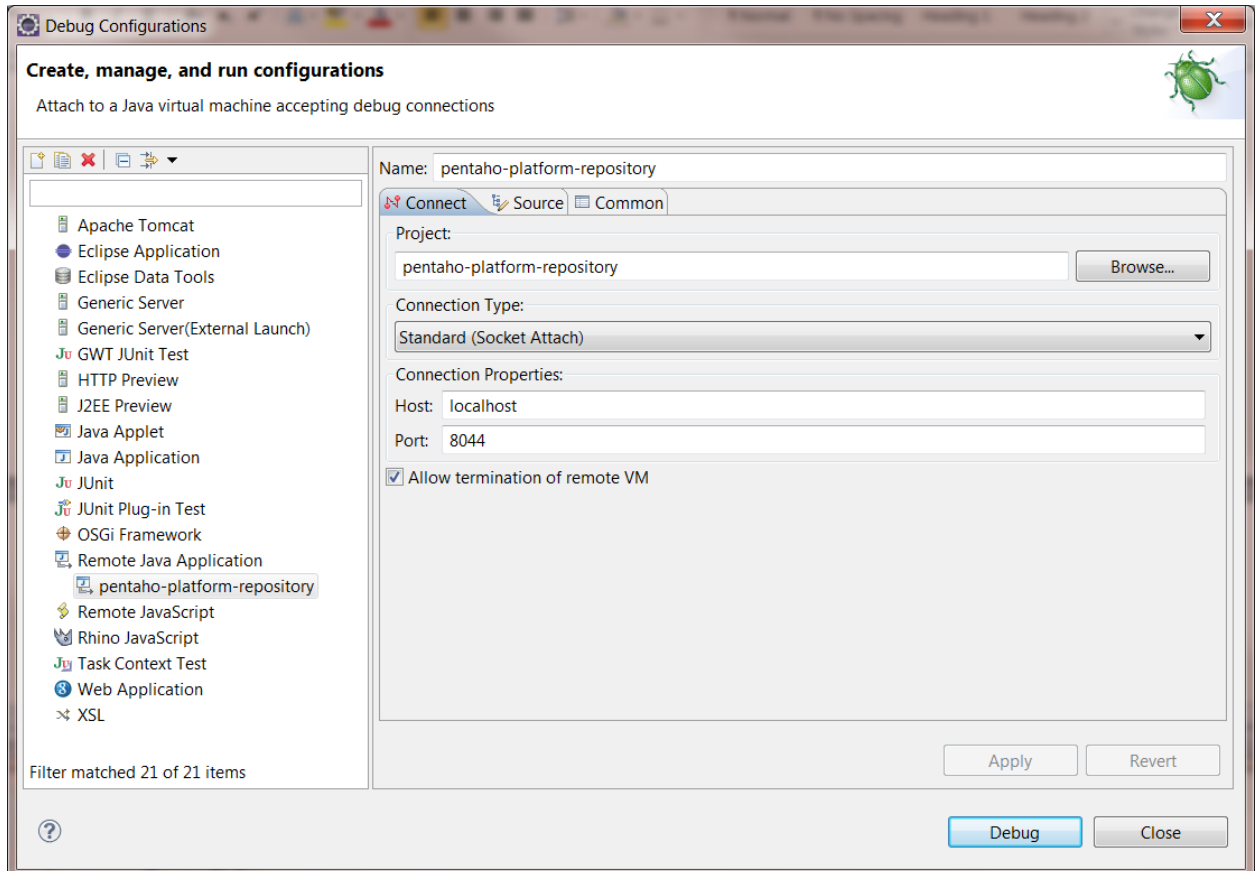
17. If you do not have an Ant view setup already, you may do so by selecting Window → Show View → Ant. Now for each of the 7 projects, drag the build.xml file into your ant view.

18. Back in Eclipse, go to Windows → Preferences and select Ivy → Settings from the dialog's tree. Fill in the Ivy Settings and Property Settings as shown below.

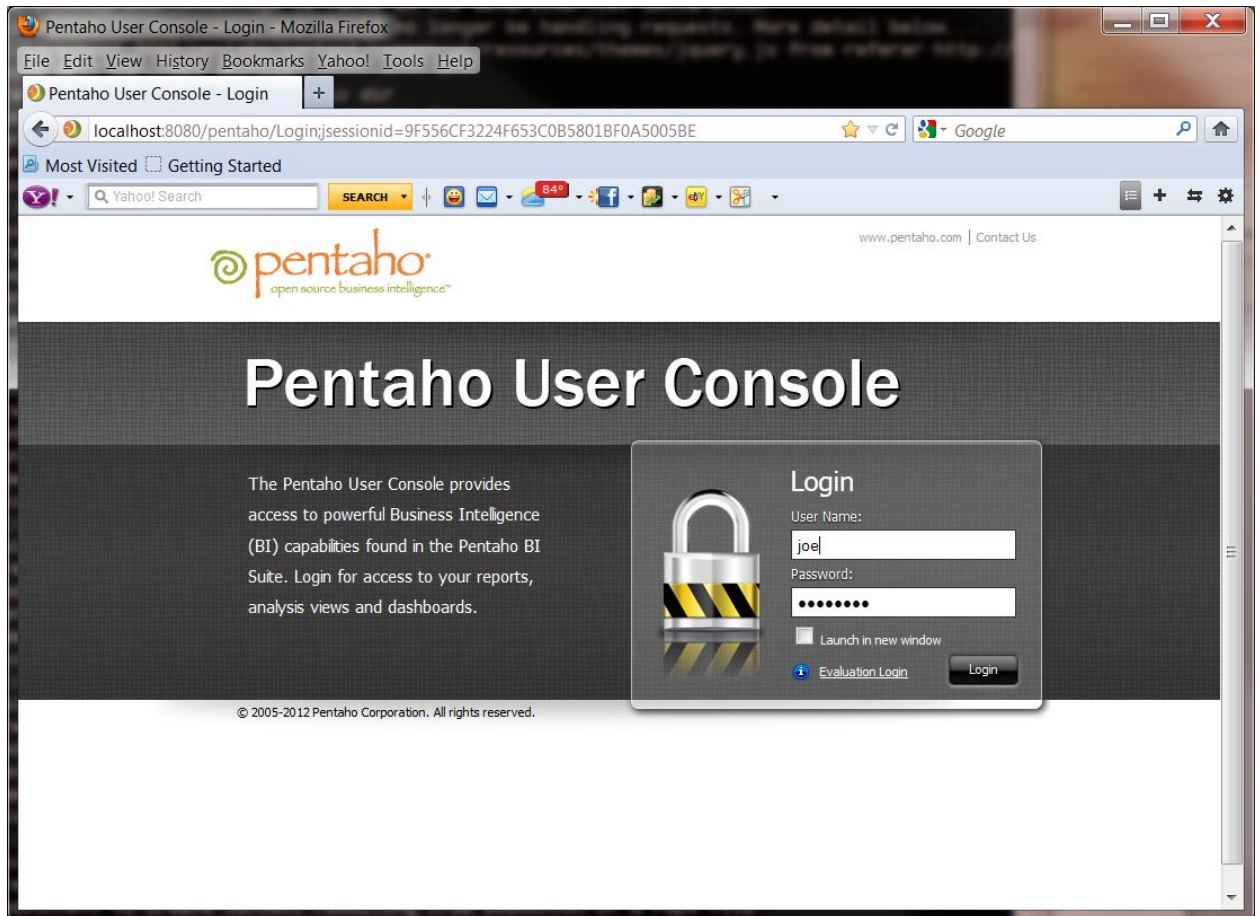


19. For each of the projects listed in step 9 (in the order listed), execute the “clean-all”, “resolve” and “test” targets in the ant script for that target. Exception (When executing scripts for the pentaho-user-console project, (named Pentaho Mantle), execute the “dist-full” target instead of the “test” target.
20. If Ivy is working properly you can also resolve dependencies using the Ivyde plugin you installed. Right click on the “pentaho-platform-api” project, select Ivy → Resolve and get Ivy to load in all the dependent jars into the class path.
21. You can check what Ivy loaded by right clicking the Project, selecting Properties → Java Build Path. Next select the Libraries tab and open the ivy.xml group from the middle list.
22. If Ivy is still not working, you can manually load the dependent jars by running the create-dot-classpath ant target. This will manually adjust the .classpath file for the project.

23. Now that you have gotten the build path working for the api. Repeat steps 20 and 21 on each of the projects. Do this in the order the projects are listed in step 8.
24. We are ready to setup a project to run Tomcat in debug mode. Select the pentaho-platform-repository project. In eclipse choose Run → Debug Configurations from the menu. In the dialog that follows select Remote Java Application from the list and change the port to 8044. This is the port number configured in the BISERVER-EE product you downloaded earlier.



25. In preparation for a debug test, put a breakpoint in the newTenant method of the SampleDataRepositoryLifecycleManager class.
26. Startup Tomcat by going to the Tomcat folder (a subfolder of biserver-ee folder you created) and run the start-pentaho-debug.bat file. Confirm that Tomcat is running. You may want to make a shortcut to this bat file since you will probably be running it often.
27. Now start a debug session in Eclipse by choosing Run → Debug Configurations, selecting the debug configuration you created earlier, and hitting the debug key. You may also add this to the debug menu by checking the check box for Debug in "Display in favorites menu".
28. Fire up your favorite browser and enter <http://localhost:8080/pentaho/Login> for the url. If you see the Pentaho User Console come up, you are running.



After you log in eclipse should break on the line you set the breakpoint at.

29. You are now ready to develop at will! As changes are made, you can run the “dist” target in the appropriate project to generate the jar file to move into the tomcat directory such as C:\env\biserver-ee\biserver-ee\tomcat\webapps\pentaho\WEB-INF\lib.